

DRC

PZ24-12000008
09/08/2024
FOLIAGE EXPRESSIONS
8801 SW 192nd Trce
Cutler Bay, FL 33187



Digitally signed by
James B. Euell
Date: 2024.07.29
08:56:29 -0400

ECO POMPANO TOWNHOMES

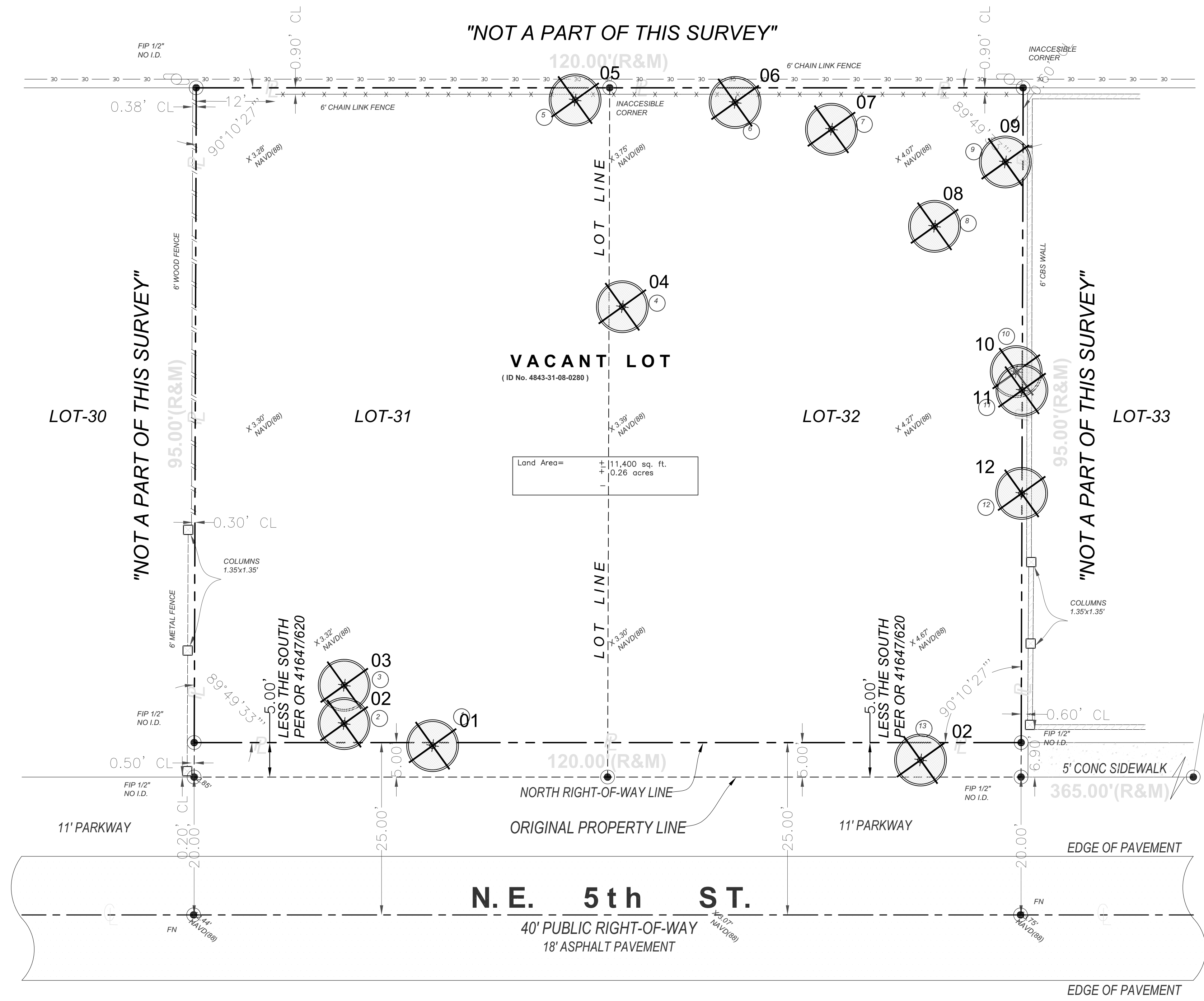
3225 NE 5TH STREET
POMPANO BEACH FLORIDA 33062

DISTRIBUTION: DATE:
SITE PLAN COMMENTS 07-06-24

DRAWING NAME:
TREE DISPOSITION PLAN

DRC

PZ24-12000008
01/15/2025



LEGEND

- EXISTING TREE / PALM TO REMAIN
- EXISTING TREE/ PALM TO BE REMOVED
- EXISTING TREE / PALM TO BE RELOCATED

NOTES:

- UNDERGROUND UTILITY LINES SHALL BE ROUTED AROUND THE TREE PROTECTION AREA WHERE POSSIBLE. IF THIS IS NOT POSSIBLE, TUNNEL MADE BY A POWER-DRIVEN RAIL AUGER MAY BE USED UNDER THE TREE.
- INSTALLATION OF FENCES AND WALLS SHALL TAKE INTO CONSIDERATION THE ROOT SYSTEMS OF EXISTING TREES. POST-HOLES AND TRENCHES CLOSE TO TREES SHALL BE DUG BY HAND AND ADJUSTED AS NECESSARY TO AVOID DAMAGE TO MAJOR ROOTS.
- NO DEVELOPMENT OR CONSTRUCTION ACTIVITY--INCLUDING GRADING, THE OPERATION OR PARKING OF HEAVY EQUIPMENT, OR THE STORAGE OF MATERIAL--SHALL BE ALLOWED WITHIN THE TREE PROTECTION AREA.
- CONTRACTOR TO INSTALL PROTECTIVE FENCE BARRIER AROUND ALL EXISTING TREES TO REMAIN -- AT THE START OF THE PROJECT -- FENCE TO REMAIN IN PLACE THROUGHOUT THE DURATION OF THE PROJECT.

TREE PROTECTION DETAIL

LANDSCAPE STANDARDS

| REVISIONS | | TREE PROTECTION DETAIL | |
|-----------|---------|------------------------|----------------|
| BY | DATE | APPROVED BY: | DATE: SEP 2021 |
| TCW | 04/2010 | | DWG. NO. |
| AS | 09/2021 | | 104-1 |

SCALE: N.T.S.

URBAN FORESTRY
CITY OF POMPANO BEACH

URBAN FORESTER

| Existing Tree Survey | | | | | | | | |
|----------------------|---------------------------|-----------------|------------------|---------------|---------------|-----------|-------------|------------|
| KEY | BOTANTICAL NAME | COMMON NAME | CALIPER (INCHES) | HEIGHT (FEET) | CANOPY (FEET) | CONDITION | DISPOSITION | VALUE |
| 1 | Casuarina equisetifolia | Australian Pine | 20 | 50 | 40 | Poor | Remove | N/A |
| 2 | Casuarina equisetifolia | Australian Pine | 16 | 35 | 30 | Poor | Remove | N/A |
| 3 | Cocos nucifera | Coconut Palm | 8 | 16 | 15 | Fair | Remove | \$770.00 |
| 4 | Casuarina equisetifolia | Australian Pine | 23 | 50 | 40 | Poor | Remove | N/A |
| 5 | Cupaniopsis anacardioides | Carrotwood Tree | 7 | 20 | 15 | Good | Remove | N/A |
| 6 | Bischofia javanica | Bishopwood | 30 | 60 | 30 | Good | Remove | N/A |
| 7 | Sabal Palmetto | Sabal Palm | 14 | 8 | 8 | Good | Remove | \$300.00 |
| 8 | Coccoloba uvifera | Seagrape | 16 | 25 | 25 | Fair | Remove | N/A |
| 9 | Casuarina equisetifolia | Australian Pine | 21 | 60 | 40 | Poor | Remove | N/A |
| 10 | Casuarina equisetifolia | Australian Pine | 7 | 30 | 20 | Poor | Remove | N/A |
| 11 | Casuarina equisetifolia | Australian Pine | 7 | 30 | 20 | Poor | Remove | N/A |
| 12 | Casuarina equisetifolia | Australian Pine | 15 | 40 | 30 | Poor | Remove | N/A |
| 13 | Cocos nucifera | Coconut Palm | 10 | 30 | 15 | Fair | Remove | \$1,455.00 |

NOTE: All height and canopy numbers are in feet. Palm height is overall height.

CITY OF POMPANO NOTES:

- Trees must be protected during entire project until completion.
- *No tree/palm roots or parts shall be cut or damaged due to construction activities on site. If there are any tree/palm root conflicts, contact Urban Forestry Staff for assistance 954-786-452P

| PALMS AND TREES MITIGATION | | | | | | |
|---|-----------------------------|----------------|--------------|------------|---------------------|------------|
| 3 non specimen Coconut palms with a diameter of 32" to be removed. The proposed landscape plan has 3 Additional Sabal palms to cover the required mitigation. | | | | | | |
| 1 non specimen tree to be removed with 16" to be mitigated. The proposed landscape plan has 6 additional trees to cover the required mitigation. | | | | | | |
| Please see tree replacement breakdown below: | | | | | | |
| QTY | Species / Name | Inches | Total Inches | Unit Cost | Installed Unit cost | Total Cost |
| 2 | Clusia rosea / Pitch Apple | 3 Inches each | 6 Inches | \$350 Each | \$875 | \$1,750 |
| 4 | Tabebuia heterophylla | 3 Inches each | 12 Inches | \$180 Each | \$450 | \$1,800 |
| 3 | Sabal Palmetto / Sabal Palm | 12 Inches each | 36 Inches | \$160 Each | \$400 | \$1,200 |
| TOTAL | | | 54 Inches | | | \$4,750 |

